

KET HEAVY DUTY STABBING GUIDES

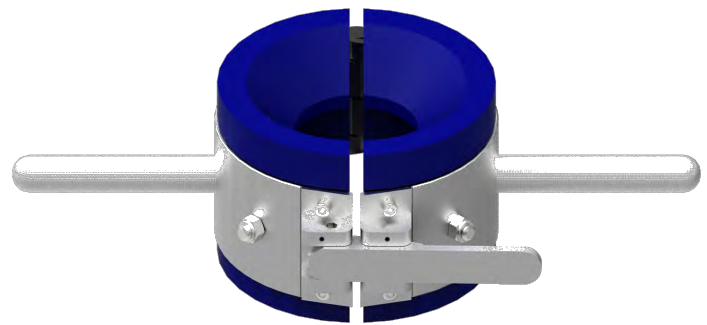
337-365-4411

sales@k-e-t.com

Keystone Heavy-Duty Stabbing Guides help to reduce damages to connections while making up connections.

Features include

- ▶ Polyurethane Inserts
- ▶ Light weight Aluminum construction
- ▶ Corrosion Resistant Hardware
- ▶ Adjustable Latch Cam
- ▶ Range = 1" thru 8 1/2" Tool joint OD



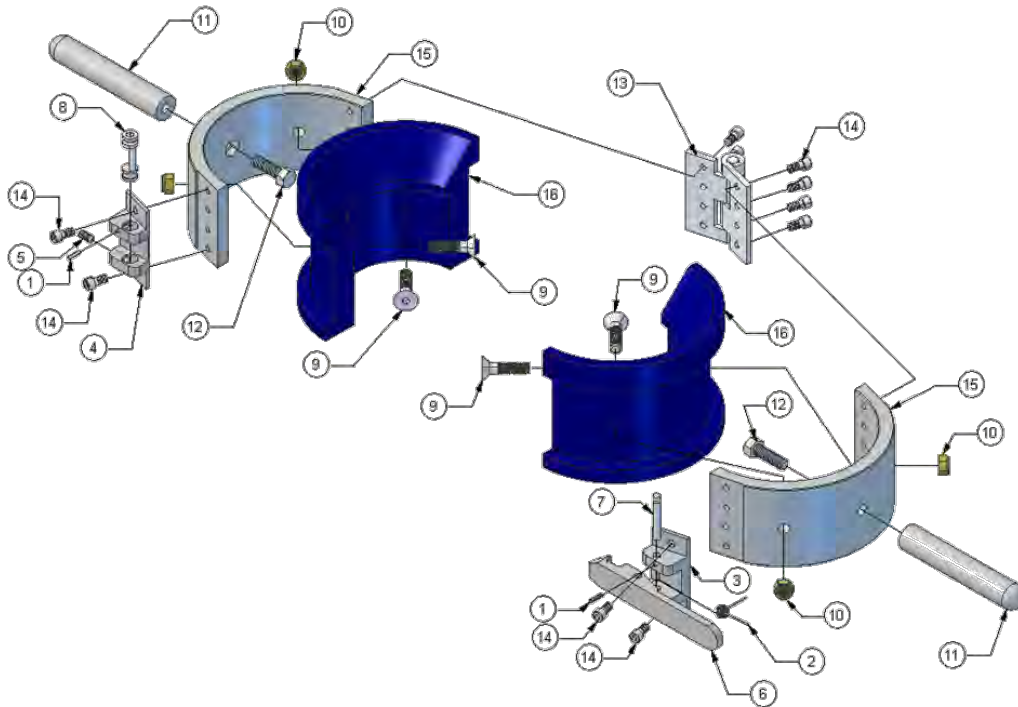
STABBING GUIDES

PART NO.	INSERT ONLY/SET	DESCRIPTION	WEIGHT (LBS.) INSERT SET	WIEGHT(LBS) ASSEMBLY
A02-502	A02-521	1" CS	1.36	4.60
A02-503	A02-522	1-1/4" CS	1.22	4.45
A02-504	A02-523	1-1/2" CS	1.15	4.40
A02-505	A02-524	2-1/16" CS	.93	4.15
A02-506	A02-525	2 3/8" CS 4.70#	4.20	8.45
A02-507	A02-526	2 3/8" PH-6 5.95#	4.10	8.35
A02-508	A02-527	2 7/8" CS	3.75	7.95
A02-509	A02-528	2 7/8" PH-6 7.90#	3.60	7.80
A02-510	A02-529	2 7/8" PH-6 8.70#	3.55	7.80
A02-512	A02-531	2 7/8" 8RD 6.5#	3.45	7.70
A02-514	A02-533	3 1/2" CS 9.3# - 10.3#	3.06	7.30
A02-515	A02-534	3 1/2" PH-6 12.95#	2.70	6.95
A02-517	A02-536	3 1/2" IF F/ 4 3/4" TJ	2.18	6.45
A02-517-2	A02-536-2	3 1/2" IF f/ 4 7/8" TJ	2.06	6.30
A02-517-1	A02-536-1	4" Full Hole	1.60	5.85
A02-5306	A02-5356	XT-39 f/ 4 7/8" TJ	2.06	6.30
A02-5308	A02-5358	XT-39 f/ 4 15/16 TJ	2.03	6.25
A02-5309	A02-5359	XT-43 f/ 5 3/8" TJ	13.10	19.90
A02-519	A02-538	4 1/2" PH-6 15.50#	1.70	5.95
A02-517-4	A02-536-1	4-1/2" FH F/5-1/4" TJ		
A02-543	A02-539	4 1/2" XH	11.45	18.25
A02-5310	A02-5360	DRILL PIPE f/ 6 1/2" TJ	10.70	17.50
A02-5311	A02-5361	DRILL PIPE f/ 7" TJ	9.30	16.10
A02-5312	A02-5362	DRILL PIPE f/ 7 1/4" TJ	8.80	15.60
A02-5313	A02-5363	DRILL PIPE f/ 8 1/4" TJ	5.95	12.75
A02-5314	A02-5364	DRILL PIPE f/ 8 1/2" TJ	5.45	12.25
A02-547	A02-540	4 1/2" IF 6 5/8" TJ	10.55	17.35
A02-545	A02-541	5" PH-6 20.3#	11.70	18.50
A02-546	A02-542	5 1/2" PH-6 23#	10.80	17.60

KET HEAVY DUTY STABBING GUIDES

337-365-4411

sales@k-e-t.com



REPLACEMENT PARTS FOR HEAVY DUTY STABBING GUIDES

PART NO.	ITEM #	DESCRIPTION	QTY	WIEGHT(LBS)
A02-550	1	RETAINER PIN	2	.01
A02-551	2	SPRING	1	.01
A02-552	3	HINGE BLOCK	1	.10
A02-553	4	CATCH BLOCK	1	.10
A02-553-S	5	SET SCREW	1	.01
A02-554	6	LATCH	1	.15
A02-555	7	LATCH PIN	1	.02
A02-556	8	LATCH CAM	1	.05
A02-557-10	9	1-1/4" SCREW	4	.04
A02-557-12	9	1-1/2" SCREW	4	.05
A02-557-14	9	1-3/4" SCREW	4	.05
A02-557-16	9	2" SCREW	4	.06
A02-557-18	9	2-1/4" SCREW	4	.06
A02-557-20	9	2-1/2" SCREW	4	.07
A02-557-22	9	2-3/4" SCREW	4	.07
A02-557-24	9	3" SCREW	4	.08
A02-557-N	10	NUT	4	.02
A02-558	11	HANDLE	2	.27
A02-558-S	12	HANDLE SCREW	2	.05
A02-559	13	HINGE	1	.40
A02-559-S	14	HARDWARE SCREW	12	.01
A02-560	15	4" RING	2	.83
A02-561	15	6" RING	2	1.34
A02-562	15	9-1/2" RING	2	2.00

KET STANDARD RUBBER STABBING GUIDES

337-365-4411

sales@k-e-t.com

Keystone Standard Rubber Stabbing Guides help to reduce damages to connections while making up connections.

- ▶ Range = 3/4" thru 6-5/8" Tool joint OD



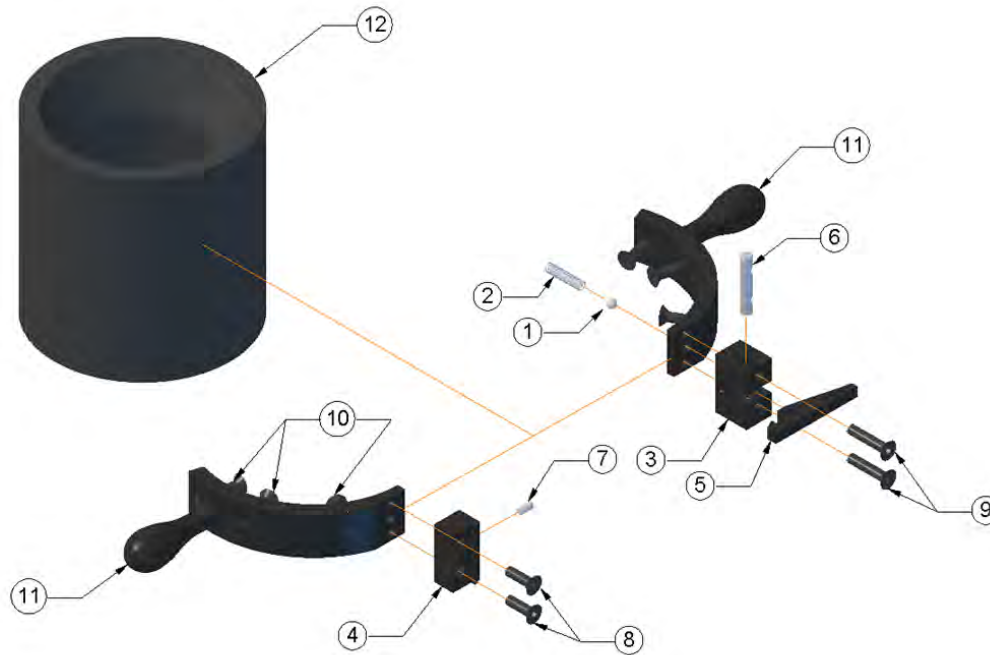
STABBING GUIDES

P/N COMPLETE	P/N RUBBER ONLY	DESCRIPTION	WT.
A02-101	A02-120	3/4" CS® STABBING GUIDE	5.00
A02-102	A02-121	1" CS® STABBING GUIDE	4.50
A02-103	A02-122	1 1/4" CS® STABBING GUIDE	5.50
A02-104	A02-123	1 1/2" CS® STABBING GUIDE	5.50
A02-105	A02-124	2 1/16" CS® STABBING GUIDE	6.50
A02-106	A02-125	2 3/8" CS® STABBING GUIDE	6.00
A02-107	A02-126	2 3/8" PH-6™ STABBING GUIDE	6.00
A02-108	A02-127	2 7/8" CS® STABBING GUIDE	7.00
A02-109	A02-128	2 7/8" PH-6™ 7.90# STABBING GUIDE	6.50
A02-110	A02-129	2 7/8" PH-6™ 8.70# STABBING GUIDE (SMALL BODY)	6.50
A02-111	A02-130	2 7/8" PH-6™ 8.70# STABBING GUIDE (LARGE BODY)	11.00
A02-112	A02-131	2 7/8" 8RD 6.50# STABBING GUIDE (SMALL BODY)	6.50
A02-113	A02-132	2 7/8" 8RD 6.50# STABBING GUIDE (LARGE BODY)	10.50
A02-114	A02-133	3 1/2" CS® 9.30# - 10.30# STABBING GUIDE	10.00
A02-115	A02-134	3 1/2" PH-6™ 12.95# STABBING GUIDE	9.50
A02-117	A02-136	3 1/2" IF STABBING GUIDE FOR 4 3/4" T.J.	12.00
A02-117-3	A02-357	3 1/2" IF STABBING GUIDE FOR 4 7/8" T.J.	12.00
A02-117-1	A02-136-1	4" F.H. STABBING GUIDE FOR 5 1/4" T.J.	12.00
A02-306	A02-356	XT-39 STABBING GUIDE FOR 4 7/8" T.J.	12.00
A02-308	A02-358	XT-39 STABBING GUIDE FOR 4 15/16" T.J.	12.00
A02-309	A02-359	XT-43 STABBING GUIDE FOR 5 3/8" T.J.	11.50
A02-119	A02-138	4 1/2" PH-6™ 15.50# STABBING GUIDE	11.50
A02-143	A02-139	4 1/2" XH STABBING GUIDE FOR 6 1/4" T.J.	14.50
A02-144	A02-148	4 1/2" IF STABBING GUIDE FOR 6 3/8" T.J.	14.25
A02-145	A02-141	5" PH-6™ 20.30# STABBING GUIDE	13.00
A02-146	A02-142	5 1/2" PH-6™ 23.00# STABBING GUIDE	13.00
A02-147	A02-140	4 1/2" IF STABBING GUIDE FOR 6 5/8" T.J.	14.00

KET STANDARD RUBBER STABBING GUIDES

337-365-4411

sales@k-e-t.com



REPLACEMENT PARTS FOR STANDARD RUBBER STABBING GUIDES

PART NO.	ITEM	DESCRIPTION	QTY	WT.
A02-150	1	BEARING	1	.05
A02-151	2	SPRING	1	.10
A02-152	3	HINGE	1	.5
A02-153	4	CATCH	1	.45
A02-154	5	LATCH	1	.12
A02-155	6	HINGE PIN	1	.13
A02-156	7	GUIDE PIN	1	.05
A02-157-9	8	CATCH SCREW	2	.09
A02-157-13	9	HINGE SCREW	2	.11
A02-157-10	10	1 1/4" CAP SCREW	4+	.13
A02-157-12	10	1 1/2" CAP SCREW	4+	.15
A02-157-14	10	1 3/4" CAP SCREW	4+	.55
A02-175	11	3" RING ONLY	2	.75
A02-176	11	3 3/4" RING ONLY	2	.85
A02-177	11	4 7/16" RING ONLY	2	.95
A02-178	11	5" RING ONLY	2	1.10
A02-179	11	6 1/8" RING ONLY	2	1.25
A02-181	11	7" RING ONLY	2	1.35
A02-182	11	8" RING ONLY	2	1.45
A02-183	11	9" RING ONLY	2	1.60
N/A	12	RUBBER ONLY (SEE TABLE, PAGE 5)	1	N/A